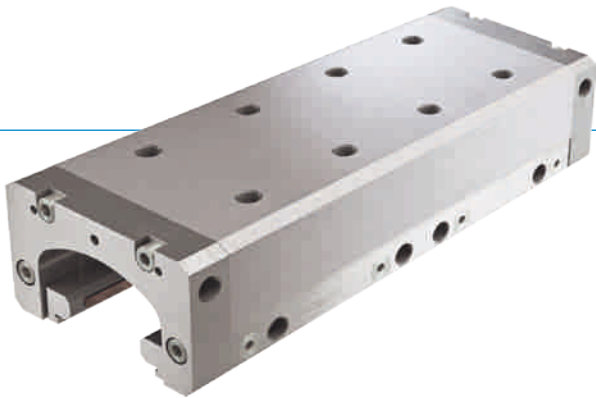


CLAMPING AND BRAKING ELEMENTS | HYDRAULIC SERIES LBHS

▶ PRODUCT ADVANTAGES



- ▶ **broad range of products**
For all common profile rail guides
- ▶ **Energize to open (NC)**
through residual stress
- ▶ **the power pack**
Up to 0.5 million static clamping cycles
- ▶ **Safety element**
Safe braking in case of energy failure

▶ THE BEST PRODUCT FOR YOUR APPLICATION

APPLICATION SCENARIOS

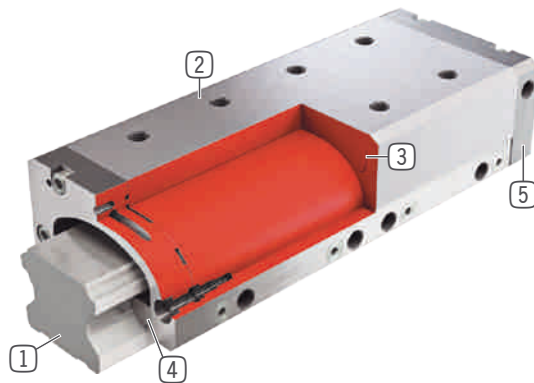
- ▶ **Precise positioning through maximum rigidity**
- ▶ **Clamping measurement applications**
- ▶ **Clamping and braking of heavy handling systems**
- ▶ **Braking in emergency OFF situations**
- ▶ **Clamping in case of pressure drop**

FURTHER INFORMATION

- ▶ **Spacer plate**
In addition, a spacer plate might have to be ordered as height compensation, depending on the height of the rail carriage (dimension D).
- ▶ **Special variants on request, e.g.**
With additional hydraulic connection (from above, from the front)

► BENEFITS IN DETAIL

- ① **Profile rail guide**
 - Available for all common profile rail guides
- ② **Housing - functional component**
 - Generating clamping force by clamping material
 - Narrow and low design
- ③ **Eroding contour**
 - Used for opening the element under pressure
- ④ **Clamping jaws and brake shoes**
 - Pressed at the free surfaces of the profile rail guide
- ⑤ **Sealing plates**
 - for double-sided hydraulic line connection
- ⑥ **Scraper**
 - Optionally available with "A" article ending



► INFORMATION ON THE SERIES

TECHNICAL DATA

Rail size	20-65 mm
Allowable operating pressure	120 bar
Allowable point pressure	130 bar
Spring storage	existing
PLUS connection	No
Static clamping cycles (B10d value)	up to 500 000
Dynamic braking cycles	up to 500
Operation	hydraulic
Operating temperature	-10 ... +70 [°C]



► Technical Information

All information just a click away at: www.zimmer-group.de

Find data, illustrations, 3D models and operating instructions for your installation size using the order number for your desired model.

Quick, clear and always up-to-date.

► Selection guide for clamping and braking elements

Whatever the possible application – here, you'll find the right product.

Easy selection of the right element for any rail-carriage combination: www.zimmer-group.de/de/plt.